

A focus on outcomes – value in health in Wales



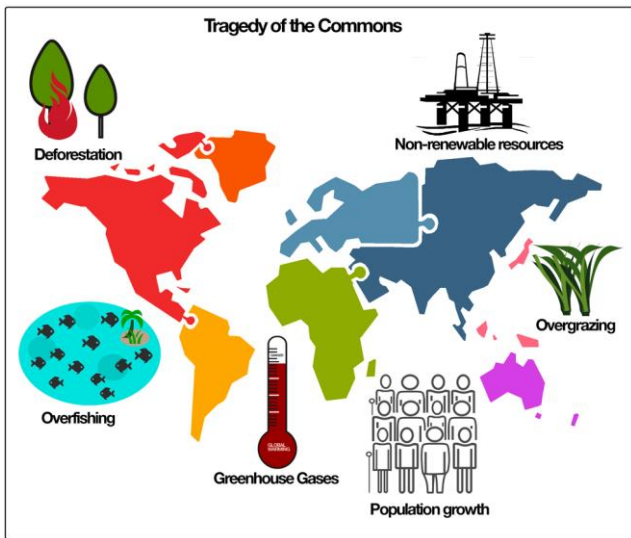
Dr. Sally Lewis (Director- Welsh Value in Health Centre, Honorary Professor Swansea School of Medicine)



@RslewisSally

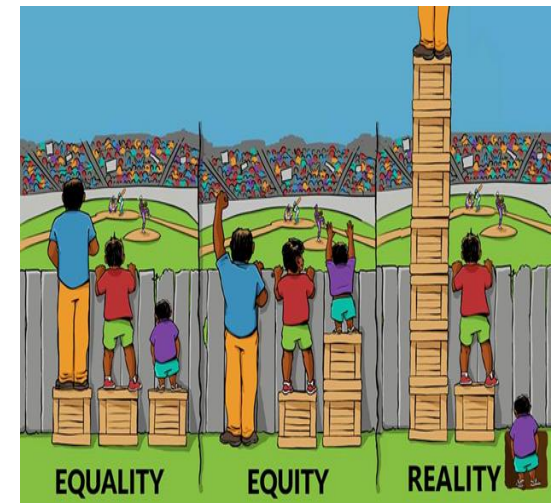
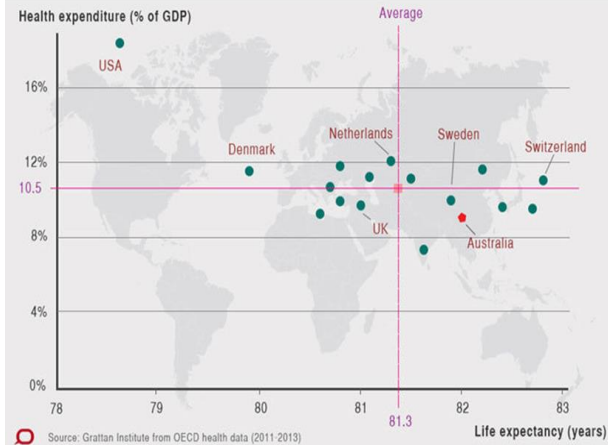
What's wrong with healthcare?

GLOBAL UNSUSTAINABILITY OF HEALTHCARE SYSTEMS AND OUTDATED SYSTEM DESIGN



INEQUITABLE, VARIABLE OUTCOMES THAT BEAR LITTLE RELATION TO COST

Expenditure on health vs. life expectancy



Slow Medicine



Definition: Value-based healthcare is the equitable, sustainable and transparent use of the available resources to achieve better outcomes and experiences for every person

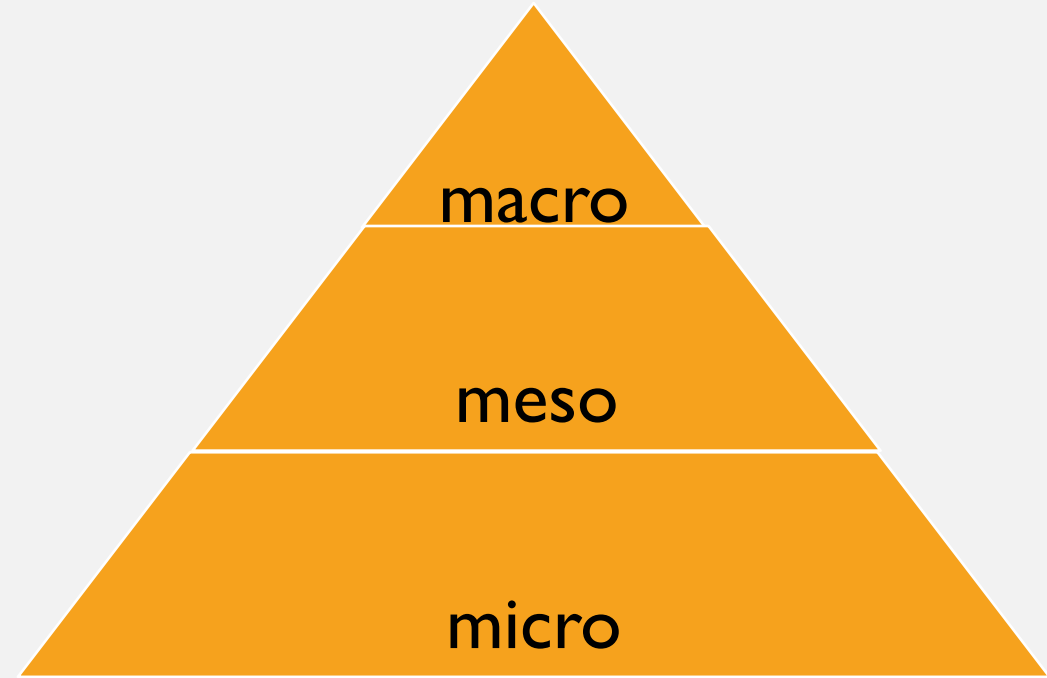
The 4 principles of prudent healthcare



- Hurst L, Mahtani K, Pluddemann A, Lewis S, Harvey K, Briggs A, Boylan A-M, Bajwa R, Haire K, Entwistle A, Handa A and Heneghan C CEBM, University of Oxford

To truly deliver value there are many things to consider...

- Population health – prevention, social determinants
- Processes of care (pathways)
- Supporting care of individuals, patients as partners in their care



Welsh ViH centre – what do we do?



Building infrastructure

All trademarks acknowledged
Copyright (Welsh Value in Health Centre) Not to be reproduced without consent



Driving impact

5
Canolfan Gwerth mewn Iechyd Cymru ●●●●● Welsh Value in Health Centre

Cultural shift

1. Community of practice for value-based healthcare

2. Intensive learning academy

3. Website vbhc.nhs.wales

4. Youtube

5. Monthly clinical webinars

6. Conferences



The 'PROMs' Standard Operating Model (PSOM) | The Welsh Value in Health Centre

71 views · 3 months ago

Savage and Gray Design Ltd

Patient reported outcomes have been collected for several years, in a variety of ways by clinical teams at Health Boards and ...

CC



VBHCast In Healthcare is Value the same as Quality ?

113 views · 1 month ago

Welsh Value in Health Centre

Value-Based Health Cast Episode 7 31.03.23.



VBHCast The Dark Side of Value - Money Matters!

201 views · 3 months ago

Welsh Value in Health Centre

In this month's Value-Based Health Cast we are joined by Tim Kelland, the Assistant Director of Finance Delivery Unit, to shed ...



VBHCast Back to Basics The 'So What' of Value Based Healthcare for Wales 27 01 23

161 views · 3 months ago

Welsh Value in Health Centre

Value Based Health Cast - Episode 4 Our hosts Dave and Nick are joined by Sally Lewis, the National Clinical Lead for ...

Health Data

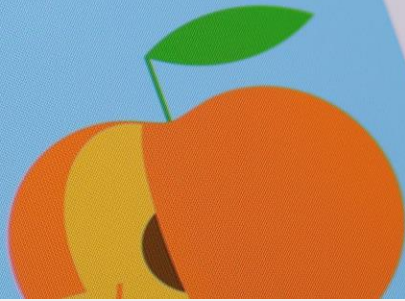
Activity



Mindfulness



Nutrition



Sleep



Data 2 knowledge 2 action



Diabetes Insights & Variation Atlas

[Click here for more](#)



Canolfan Gwerth
mewn Iechyd Cymru
Welsh Value
in Health Centre



National Epilepsy Dashboard

National Epilepsy Dashboard

[Click here for more](#)



Canolfan Gwerth
mewn Iechyd Cymru
Welsh Value
in Health Centre



National Liver Disease Dashboard

National Liver Disease Dashboard

[Click here for more](#)



Canolfan Gwerth
mewn Iechyd Cymru
Welsh Value
in Health Centre



This document has been
produced by SMC27
for the purpose stated
on page 1
© Welsh NHS plc

Last Year of Life Population Dashboard

Last Year of Life Dashboard

[Click here for more](#)

Dashboards - Value in Health (nhs.wales)



ViH - Myeloma

Possible Effects of COVID-...

Possible Effects of Covid-...

Myeloma in the Populati...

Myeloma Survival Statistics

Myeloma Survival Statisti...

Myeloma Survival Statisti...

Myeloma Chemo Care Pa...

Myeloma Chemo Care Pa...

OCS Data

Myeloma Chemo Care O...

Myeloma Chemo Care Pa...

Data Sources

Go back

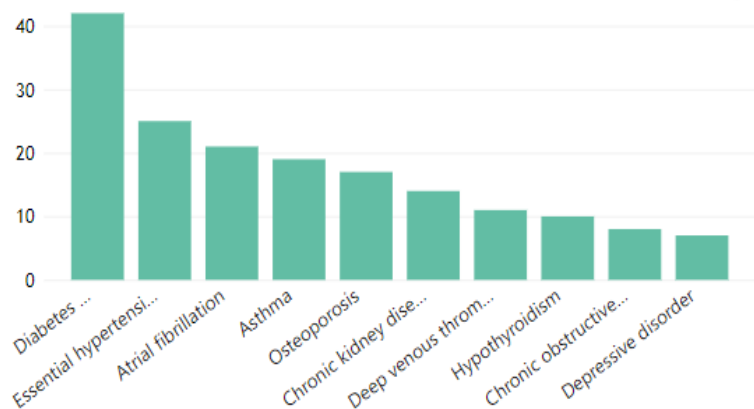


Myeloma Statistics from the Outpatient Continuation Sheets in Cardiff

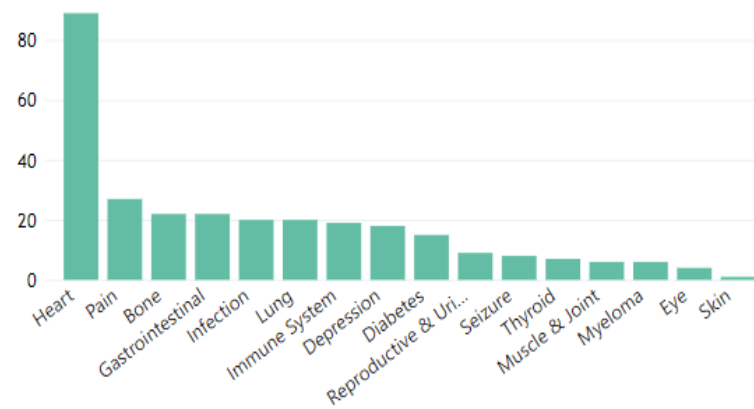
Date of Last Refresh
Oct 15, 2023



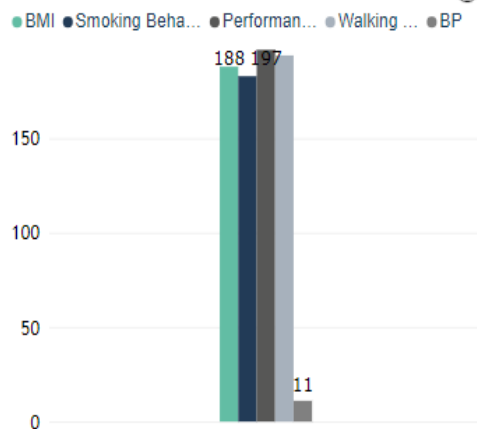
Count of Myeloma Patients with Selected Comorbidities



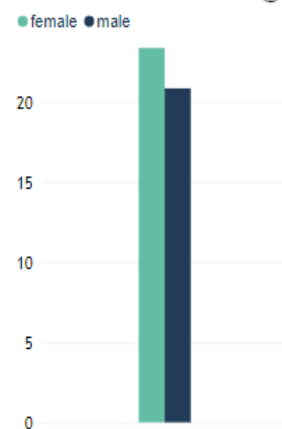
Count of Prescriptions by Type



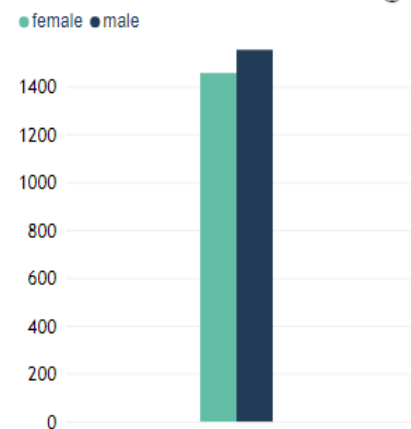
Count of Measurements in Clinic



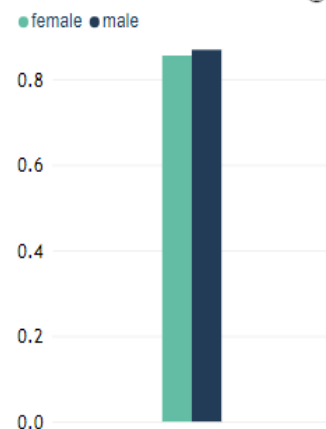
Average BMI by Sex



Average Walking Distance by Sex



Performance Scores

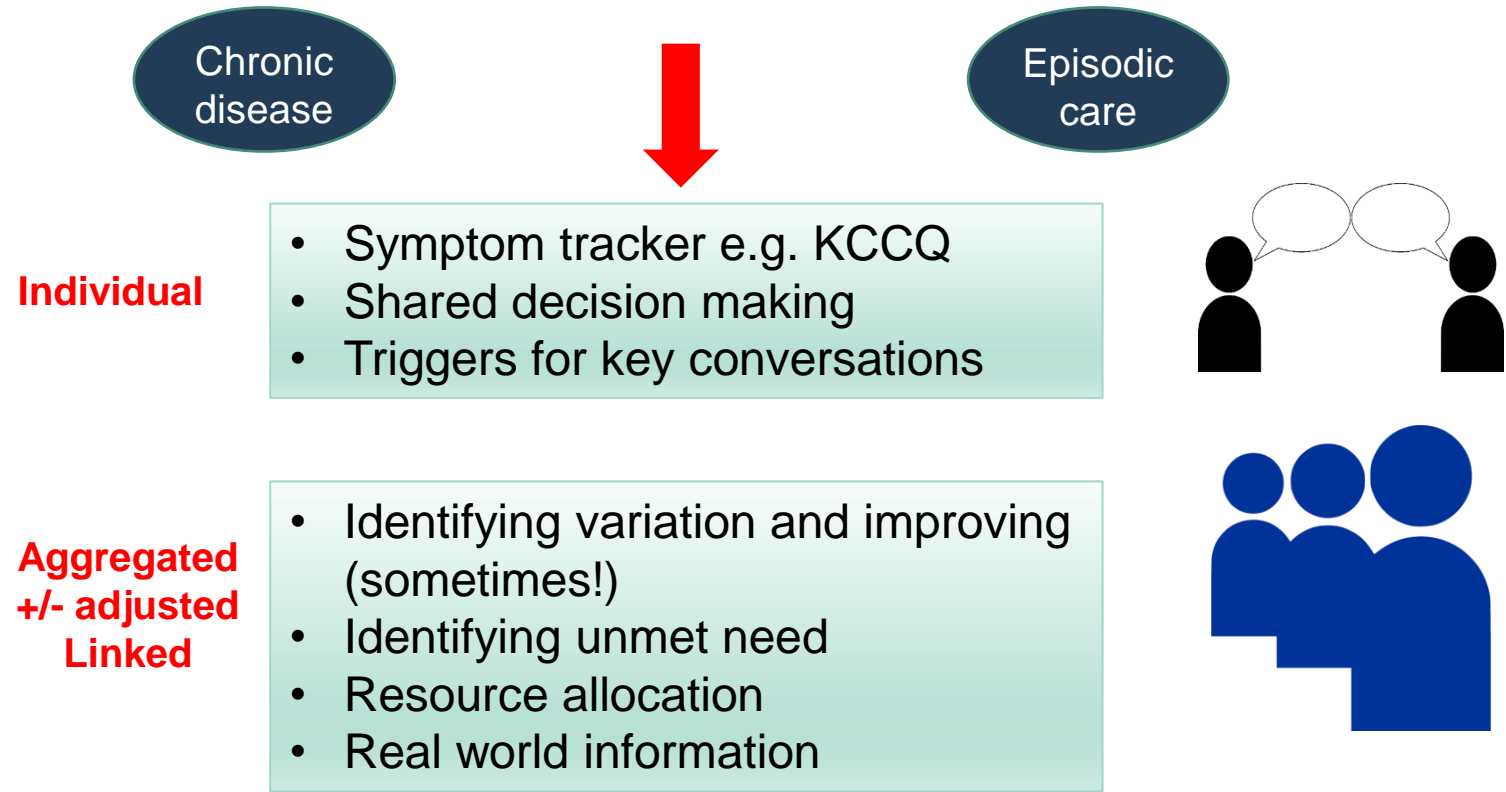


Visit the Value in Health Site:

English: <https://vbhc.nhs.wales/>
Welsh: <https://gjs.w.gig.cymru/>

USING PATIENT-REPORTED OUTCOMES – THEIR MULTIPLE ROLES

‘An outcome is a milestone, endpoint or consequence *which matters to a person*’





National Lymphoedema LYMPROM Dashboard

- Lymphrom Dashboard 1.6
- Cover
- Terms and Conditions of ...
- Introduction
- What is LYMPROM©?
- Activity (PROM level)
- LYMPROM© Results**
- LYMPROM© Results cont.
- LYMPROM© Results over...
- LYMPROM© Average Sc...
- Qualitative
- ← Go back



LYMPROM© Results for items without an N/A option



Hover over ? to view more information

There are currently no filters on the data

Show as mean (average) LYMPROM© item impact

Page Filters

Health Board

All

Date Submitted

All

Identity

All

Area of Lymph...

All

Age

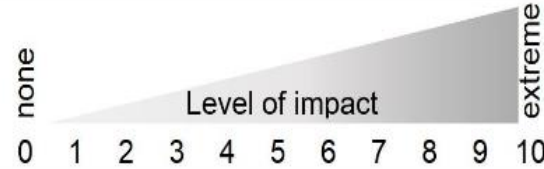
All

52%

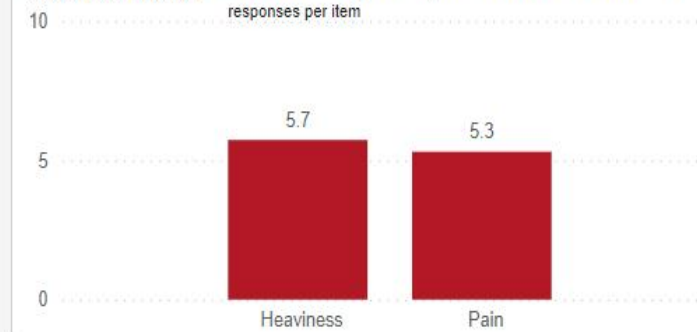
LYMPROM© Average Score

17.91K

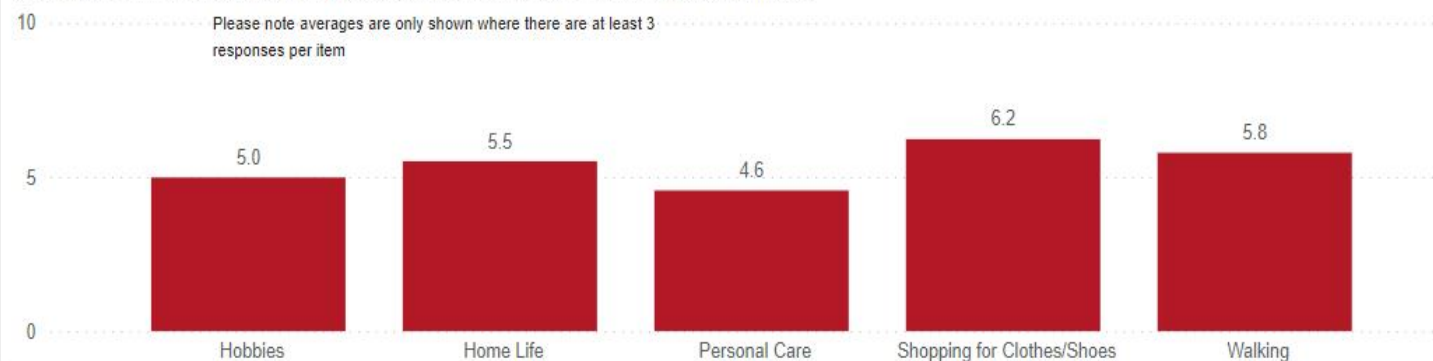
Completed LYMPROM© res...



Average LYMPROM© item impact (zero is no impact & 10 is extreme impact) Please note averages are only shown where there are at least 3 responses per item



Average LYMPROM© item impact (zero is no impact & 10 is extreme impact)



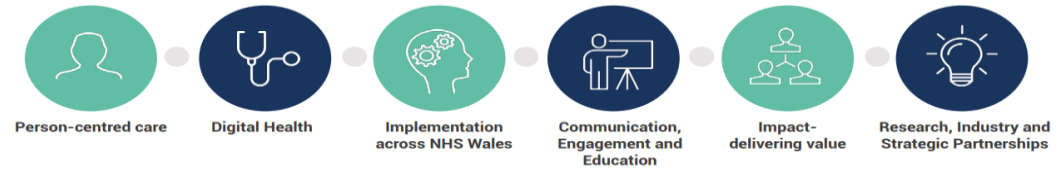
Problems to solve – the function of our new PROMs collaborative across Wales

- Interoperability
- Data visualisation
- Meaningful display of aggregated PROM data

CASE ILLUSTRATIONS...



PROMs/PREMs



Value-based healthcare demands a data-informed approach to decision making at all levels, to support shared decision making in the consultation, for quality improvement in a service, for resource allocation or for research.

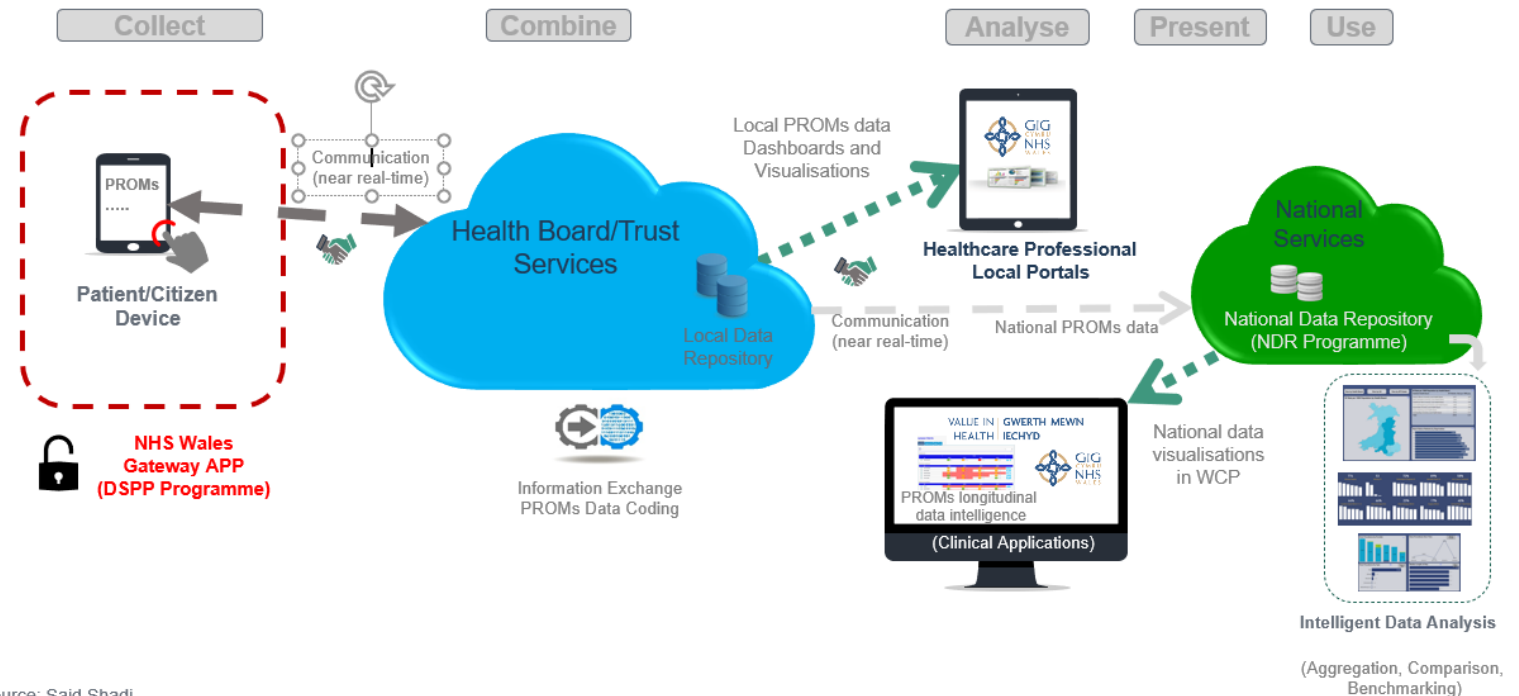
[The 'PROMs' Standard Operating Model \(PSOM\) | The Welsh Value in Health Centre – YouTube](#)

PROMs – End to End Data Flows

PROMs COLLECTION

PROMs INTEROPERABILITY

PROMs UTILISATION



vbhc.nhs.wales

Source: Said Shadi



**Canolfan Gwerth
mewn Iechyd Cymru**



**Welsh Value
in Health Centre**



www.vbhc.nhs.wales



vih@wales.nhs.uk

